

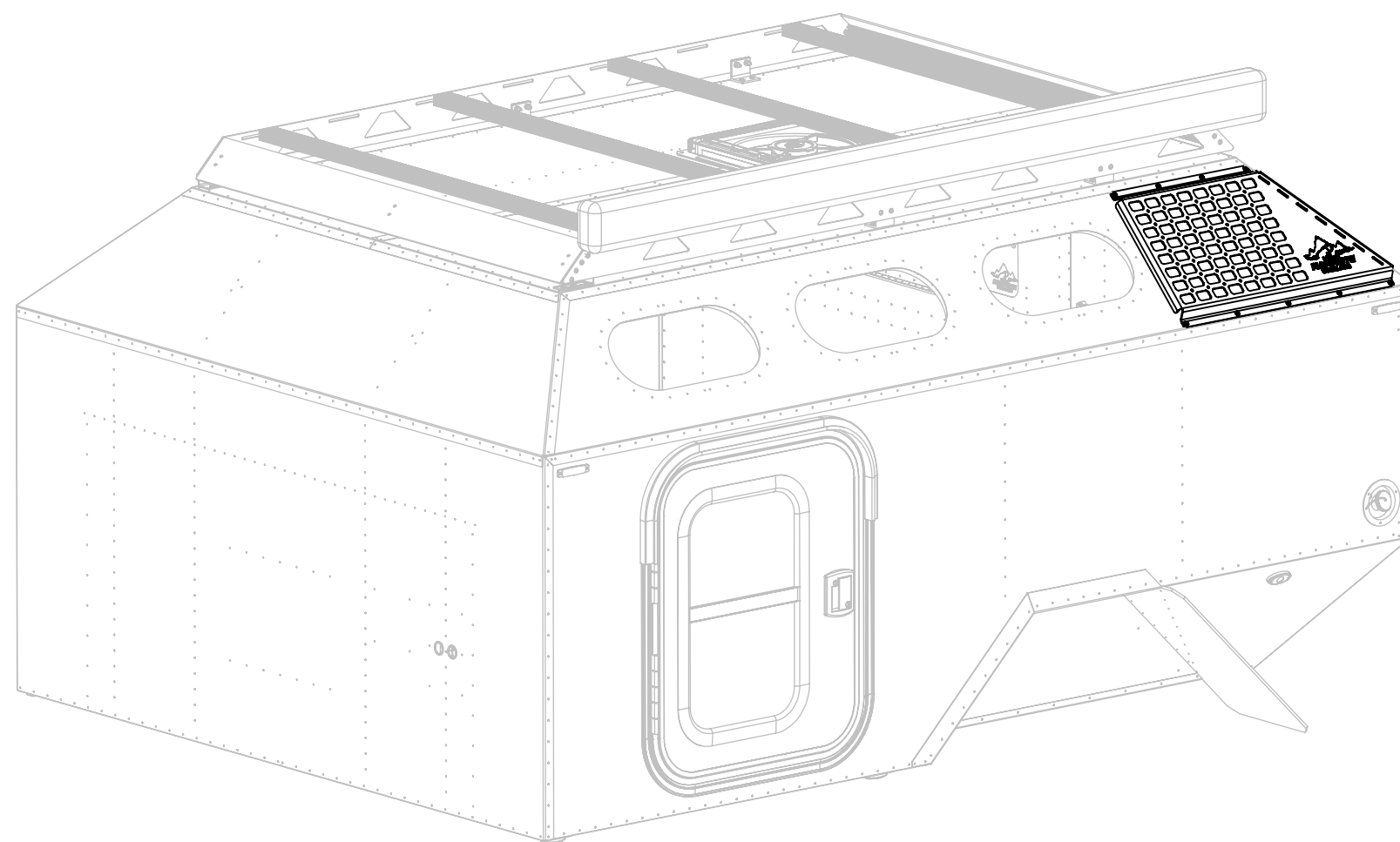
SECTION R8: ***MOLLE PANEL INSTALLATION***

PARTS INCLUDED:

- 2X MOLLE PANELS (520143, 520144)
- 18X 10-24 BUTTON HEAD SCREWS
- 18X #10 WASHERS
- 18X 10-24 RIVNUT

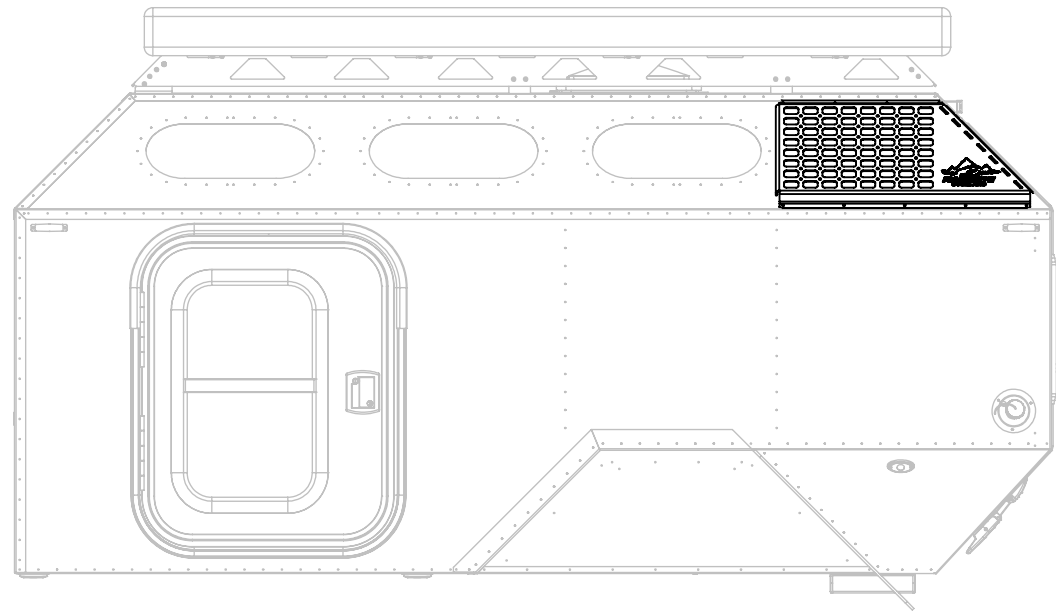
TOOLS REQUIRED:

- ALLEN WRENCH
- Ø3/16 DRILL BIT
- Ø19/64" DRILL BIT
- RIVNUT PULLER WITH 10-24 CAPABILITY
- TAPE

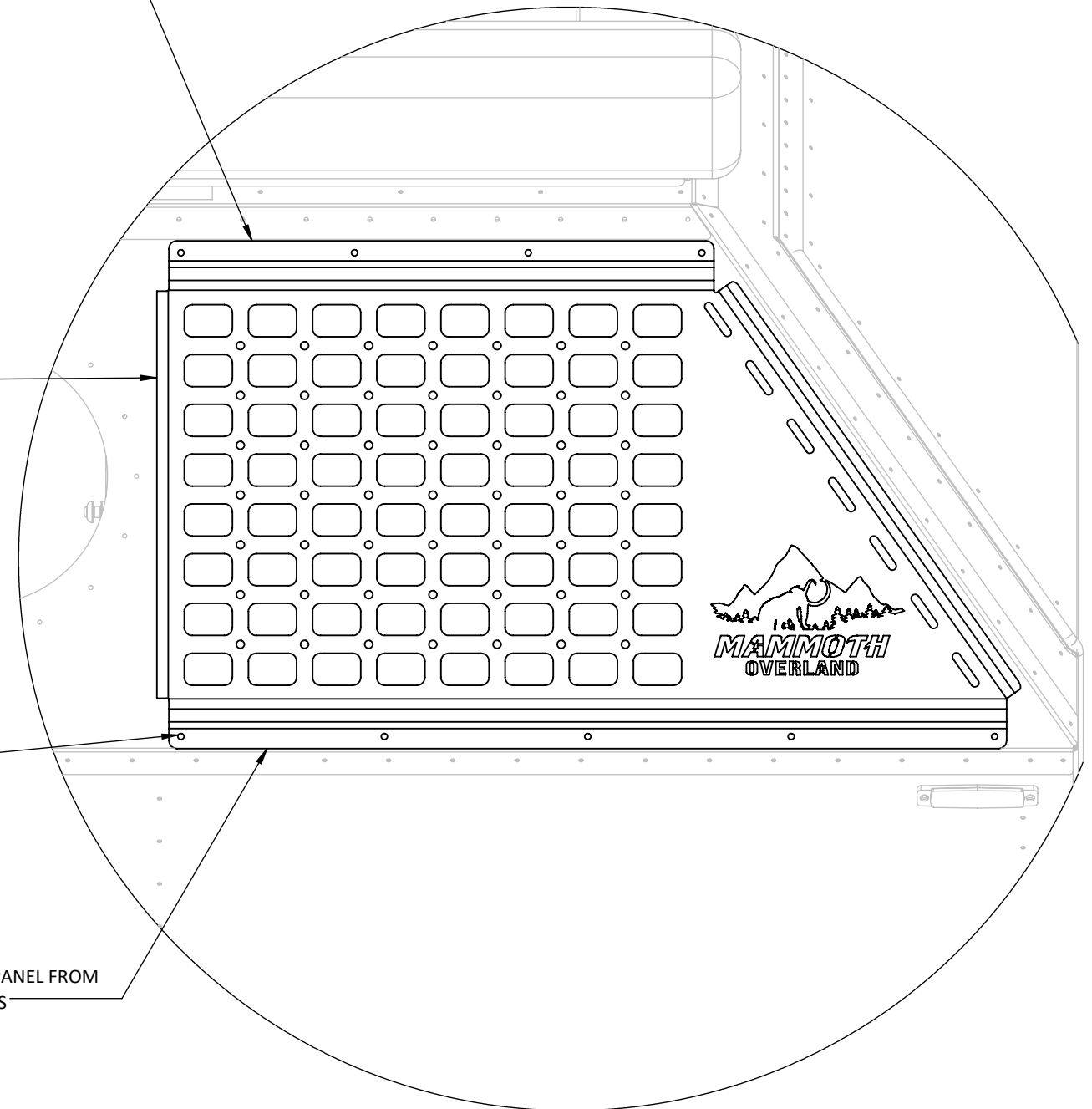


Step 1:

-POSITION and TAPE panel onto skin



① POSITION PANEL AS SHOWN. EXACT POSITION IS NOT CRITICAL



③ MATCH-DRILL ALL THE FLANGE HOLES (9PL) INTO THE CABIN SKIN USING A Ø3/16 DRILL BIT. EVERY SO OFTEN, PLUG A DRILLED HOLE WITH A PROVIDED FASTENER TO HELP KEEP THE PANEL IN POSITION WHILE DRILLING SUBSEQUENT HOLES.

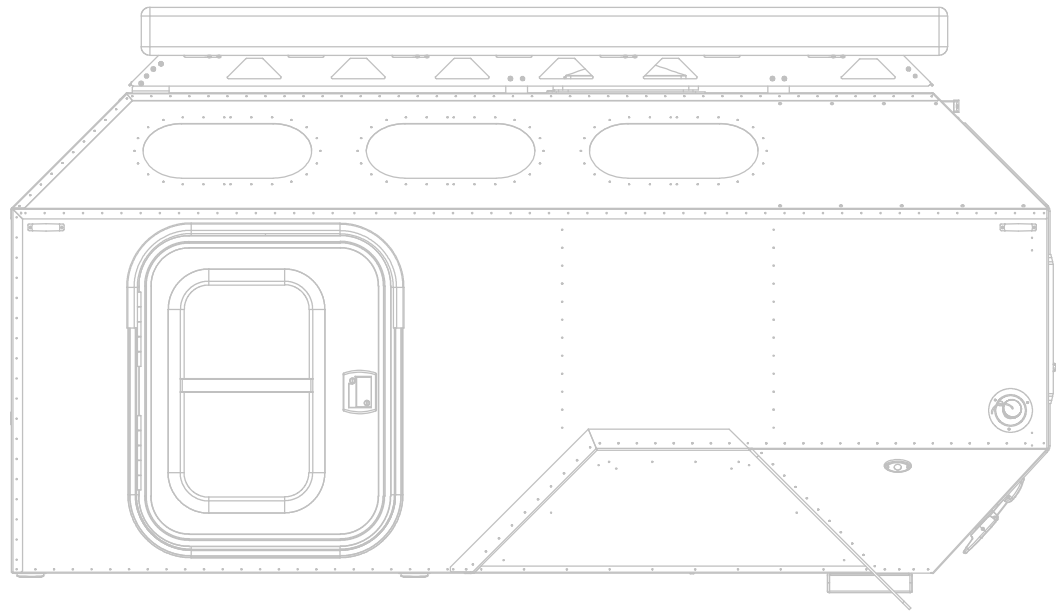
② TAPE FLANGE(S) DOWN IN A FEW PLACES TO PREVENT THE PANEL FROM SLIDING AROUND DURING THE DRILLING PROCESS

Step 2:

NOTE: THERE IS NO WIRING TO WORRY ABOUT BEHIND THIS AREA BEING DRILLED

-MATCH DRILL holes into cabin skin

-REPEAT for opposite side, using 520144 as a template



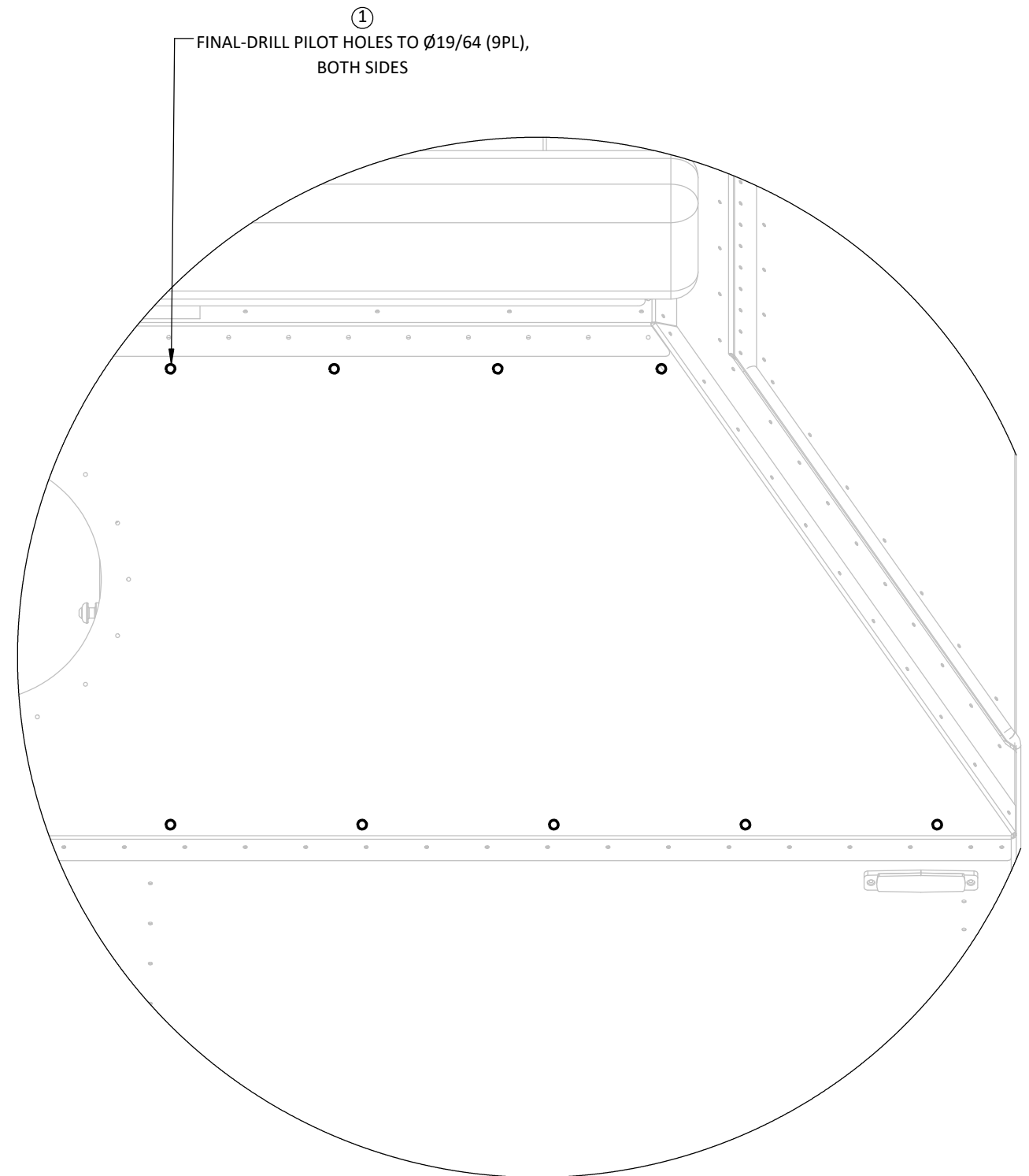
Step 1:

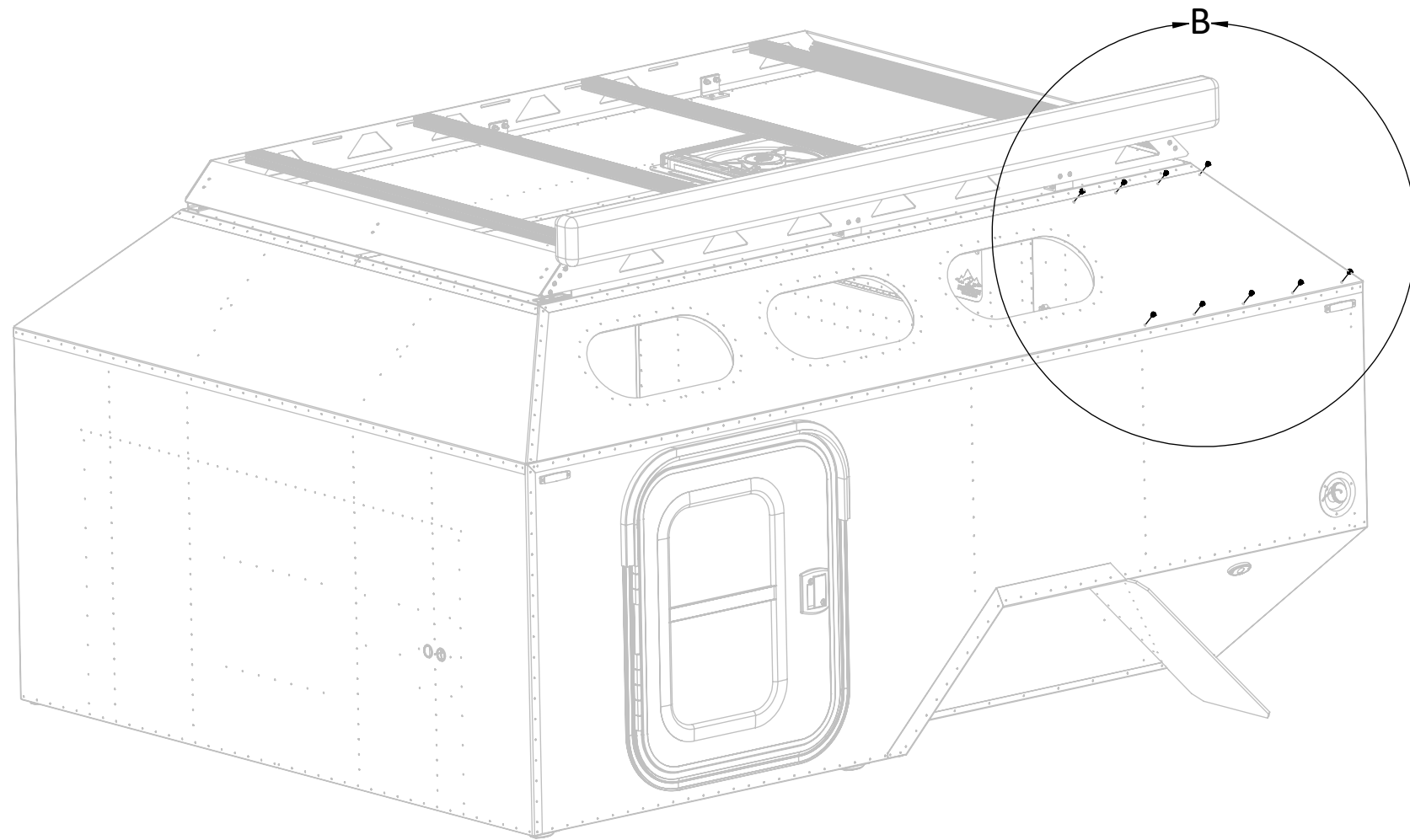
-REMOVE panel from skin

Step 2:

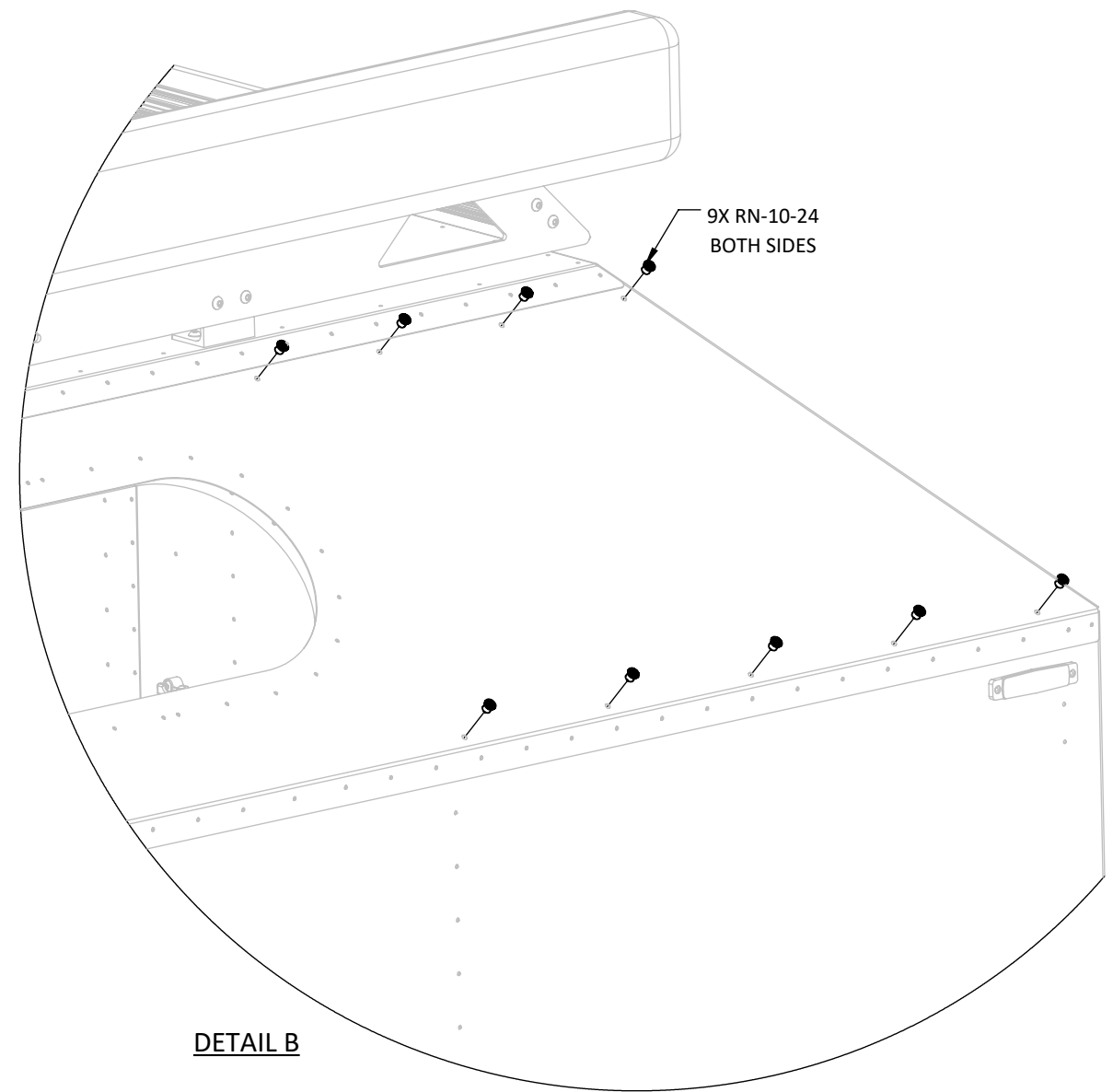
*NOTE: THERE IS NO WIRING TO WORRY ABOUT
BEHIND THIS AREA BEING DRILLED*

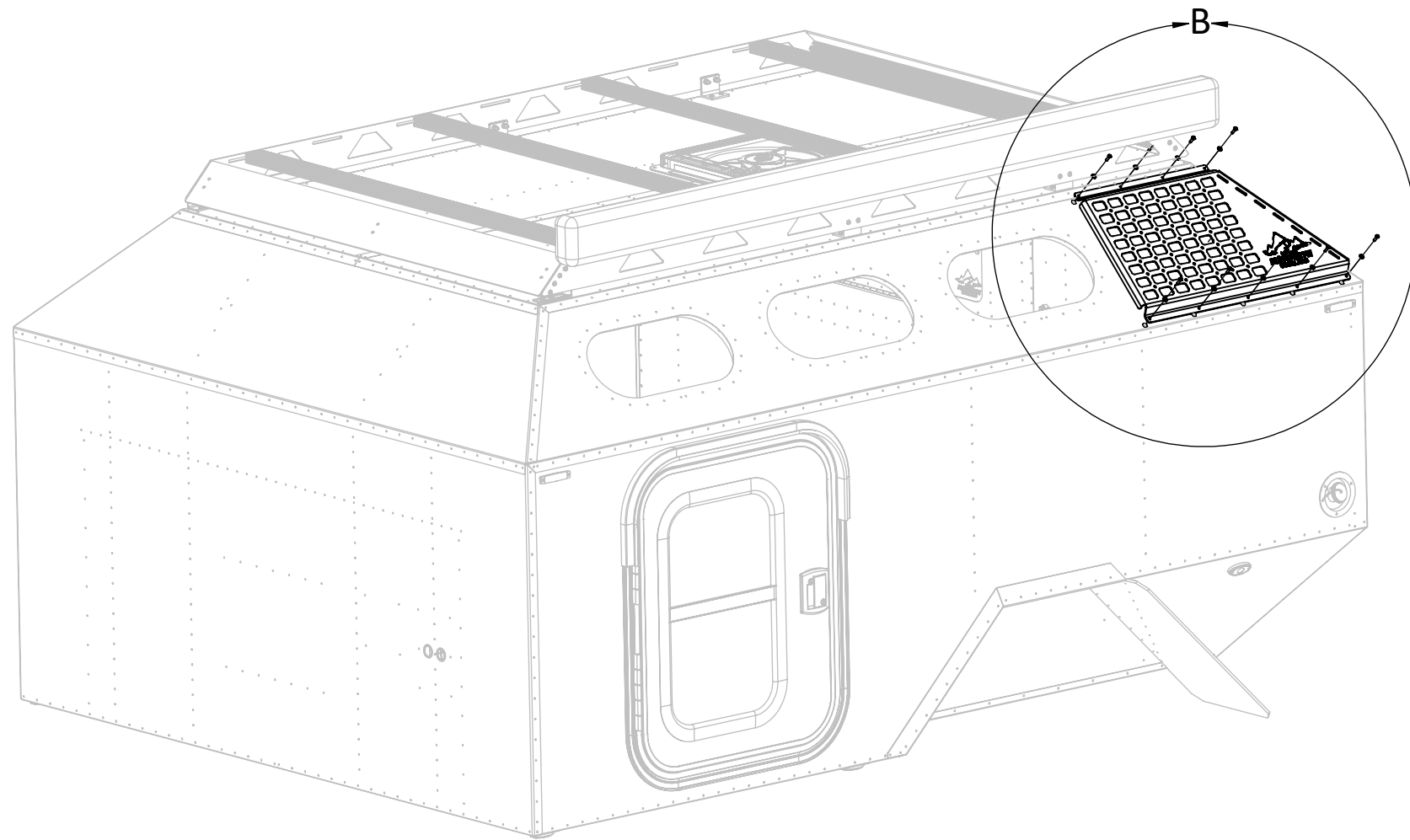
-FINAL-DRILL holes into cabin skin
-REPEAT for opposite side



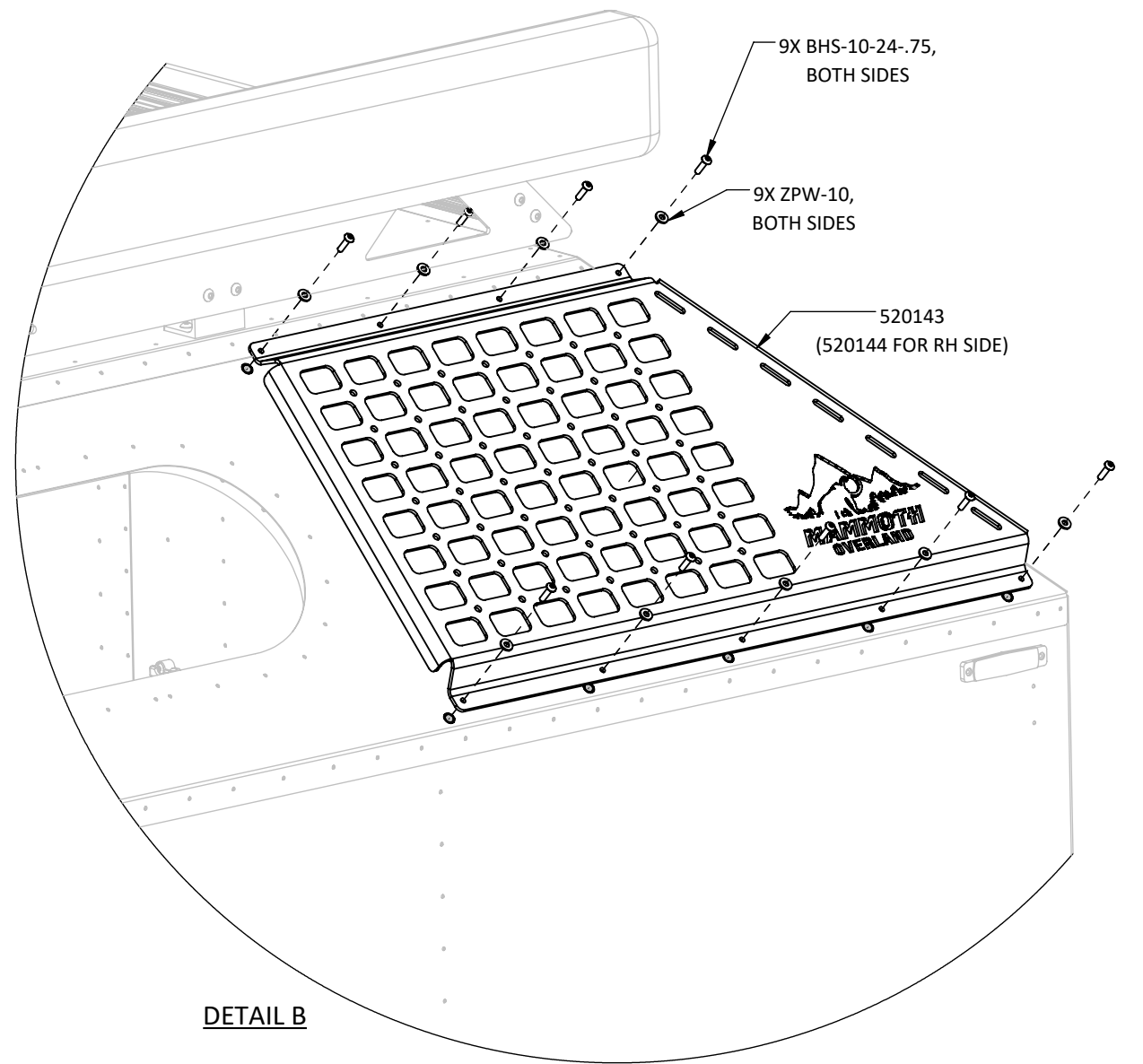


STEP 1:
-INSTALL RIVNUTS
-REPEAT for opposite side





STEP 1:
INSTALL panels



DETAIL B